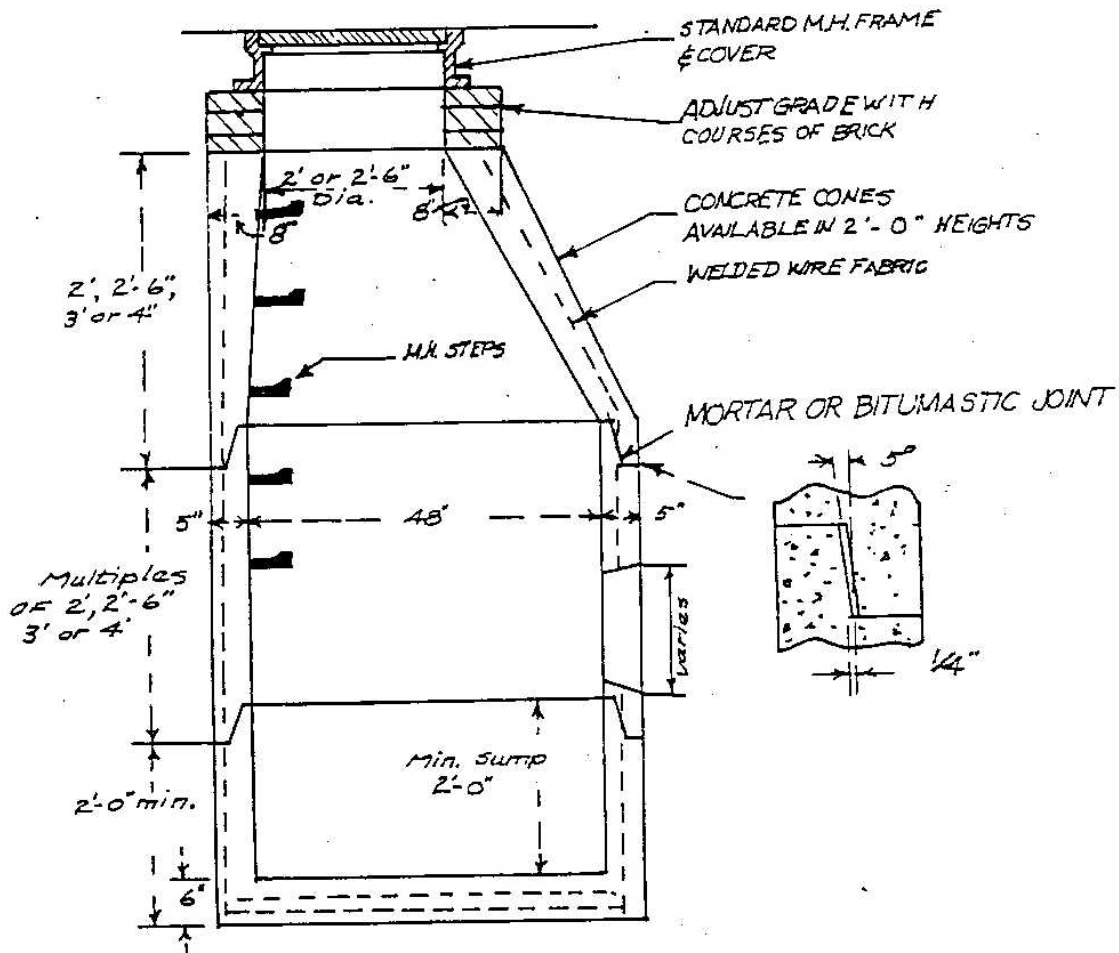
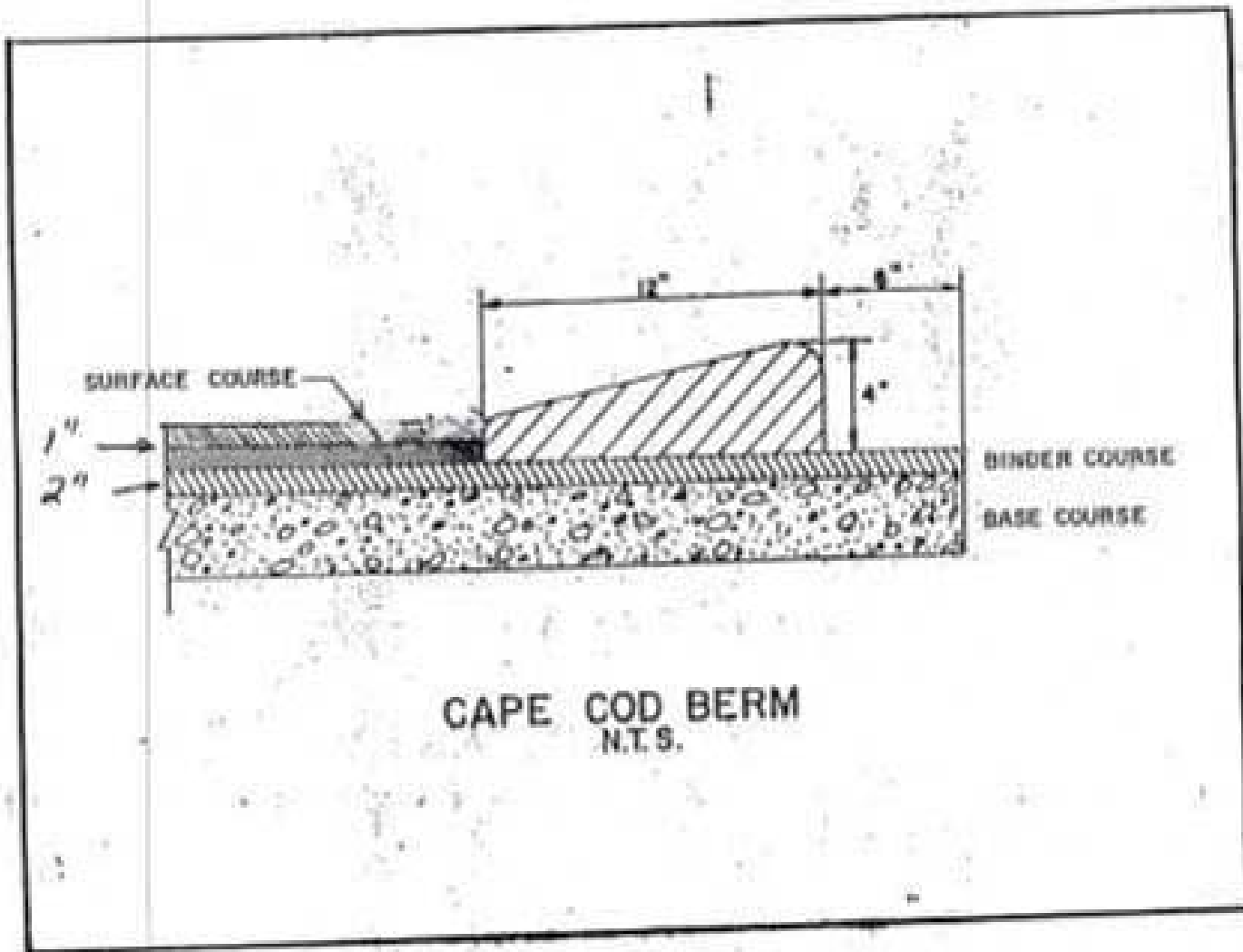


TYPICAL CATCH BASIN TOWN OF WINDHAM

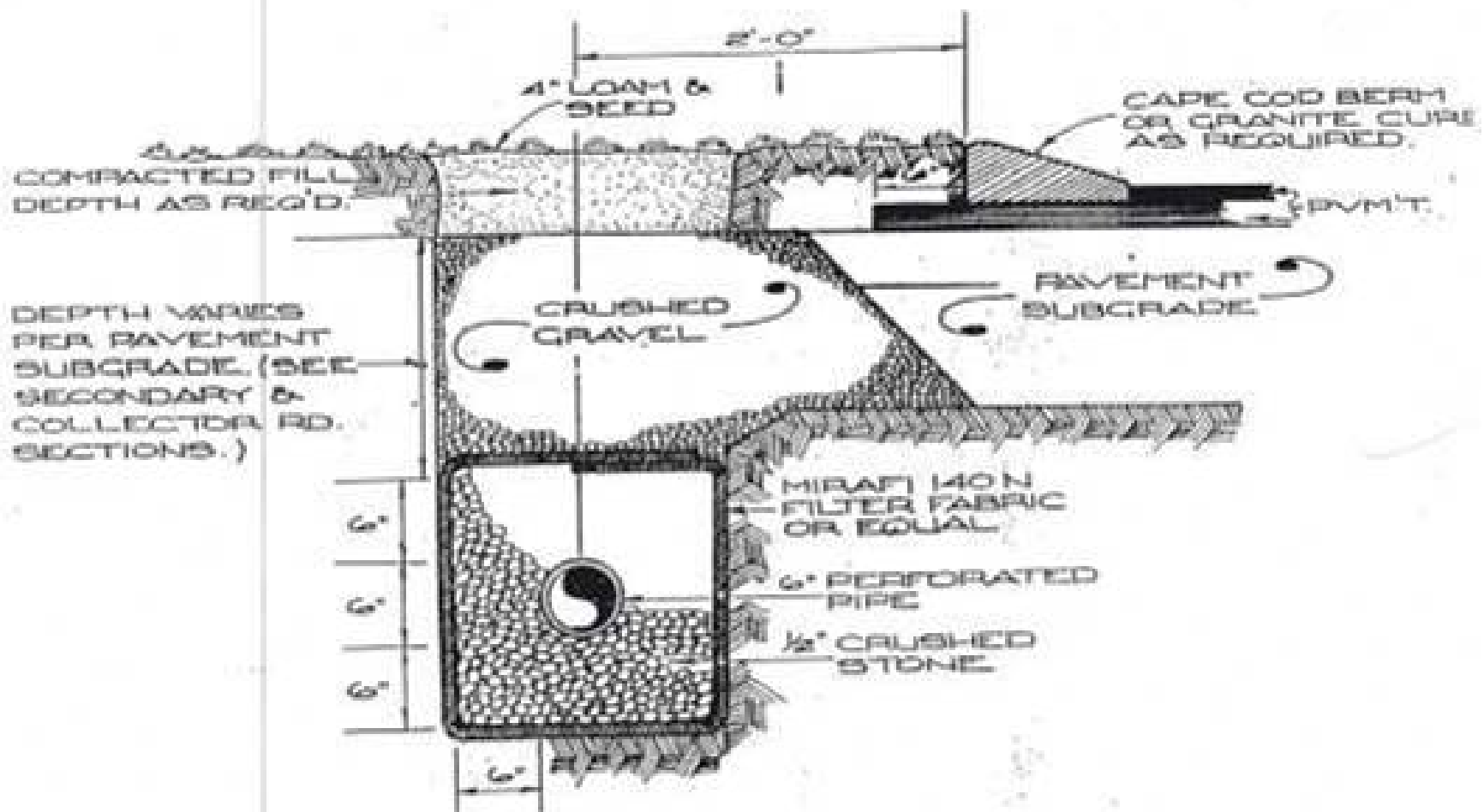


NOTES

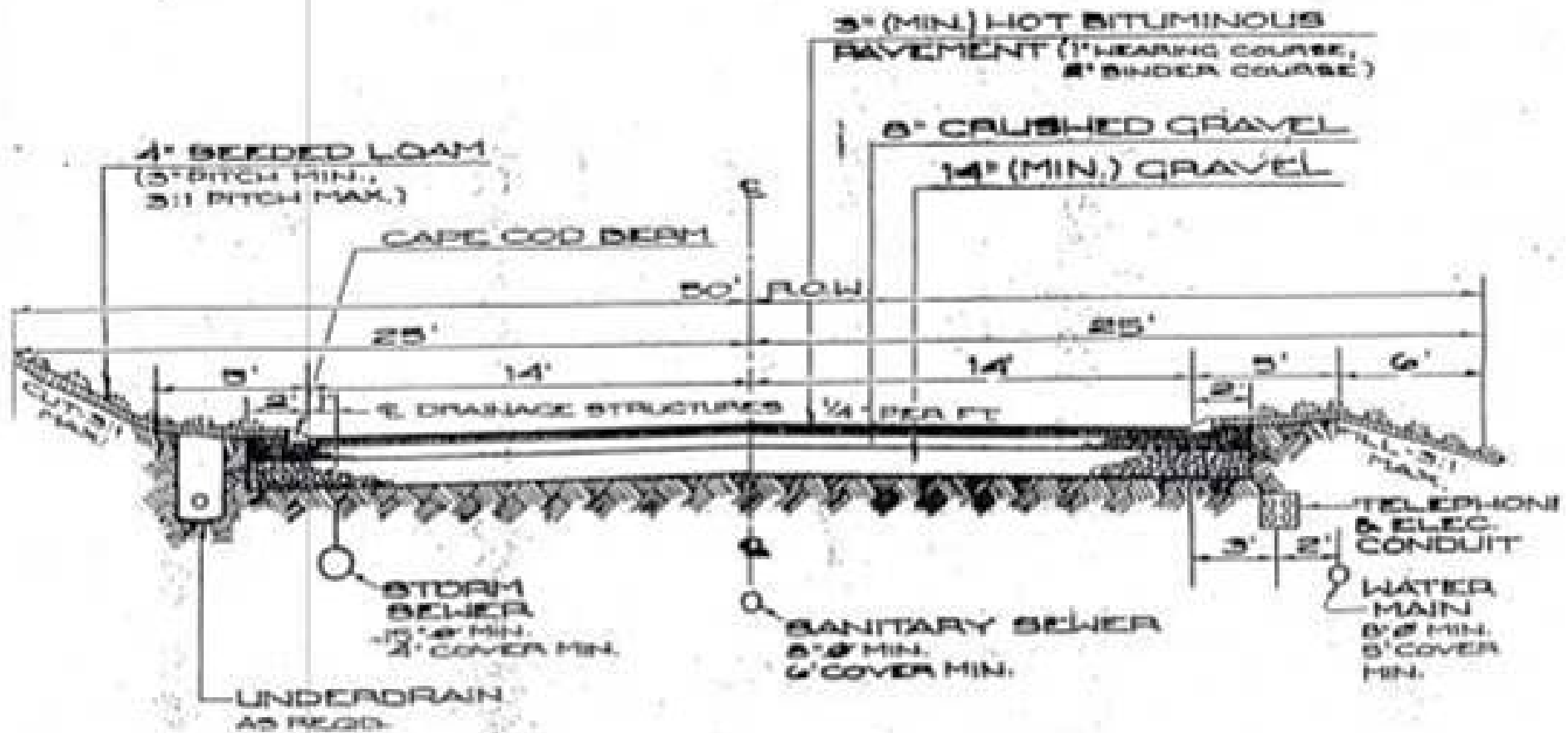
1. Manhole design to latest ASTM C478.
2. Reinforcing steel conforms to latest ASTM A185.
3. Concrete Compressive strength-4000PSI @ 28 days.
4. One pour monolithic base.
5. When specified, manholes waterproof coated.
6. STEPS - steel reinforced copolymer polypropylene plastic (P52-PF3L M.A. Industries, Inc.) conforms to latest ASTM C478 Para.-12 -- as required.
7. Bitumastic butyl rubber for joints conform to latest ASTM C443 and FED 55-5-210A Spec.
8. Kor-N-Seal flexible pipe connectors from 3.5" to 21.25" O.D. ASTM C923, A167.



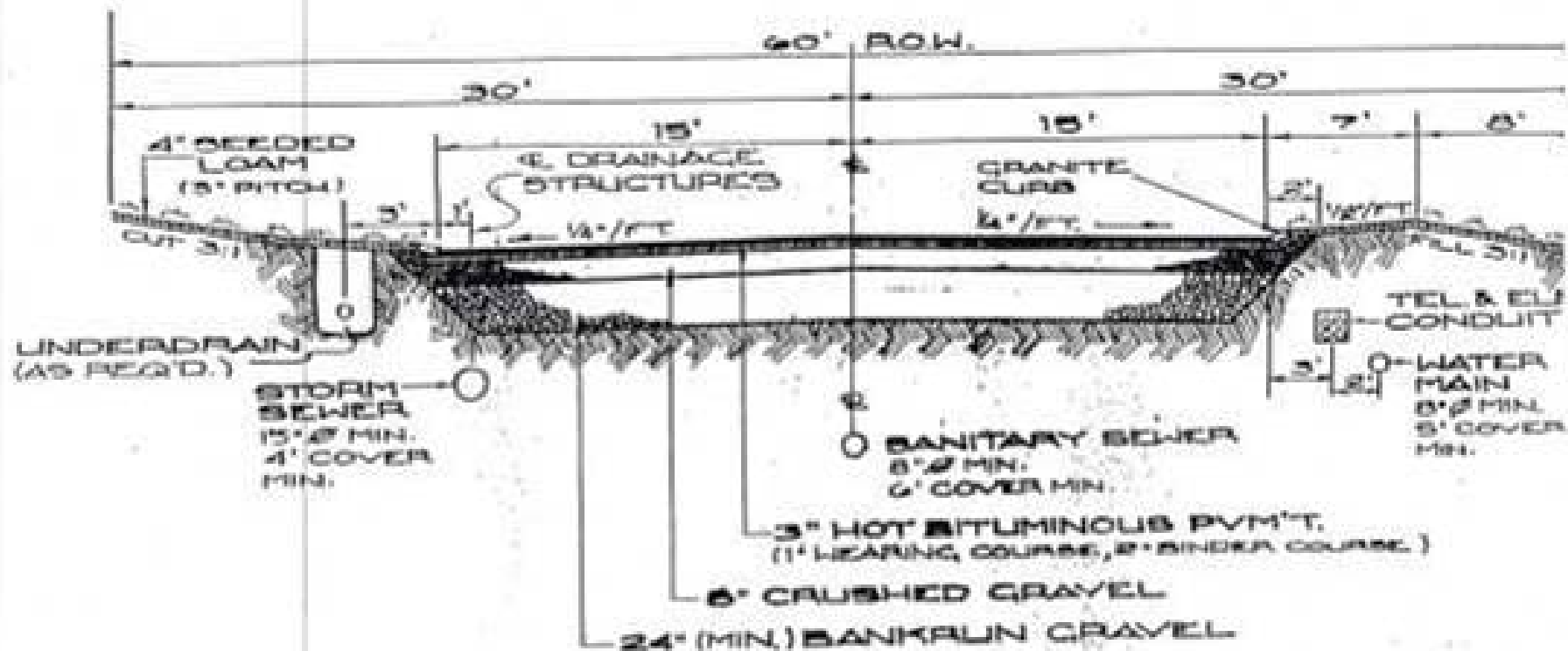
CAPE COD BERM
N.T.S.



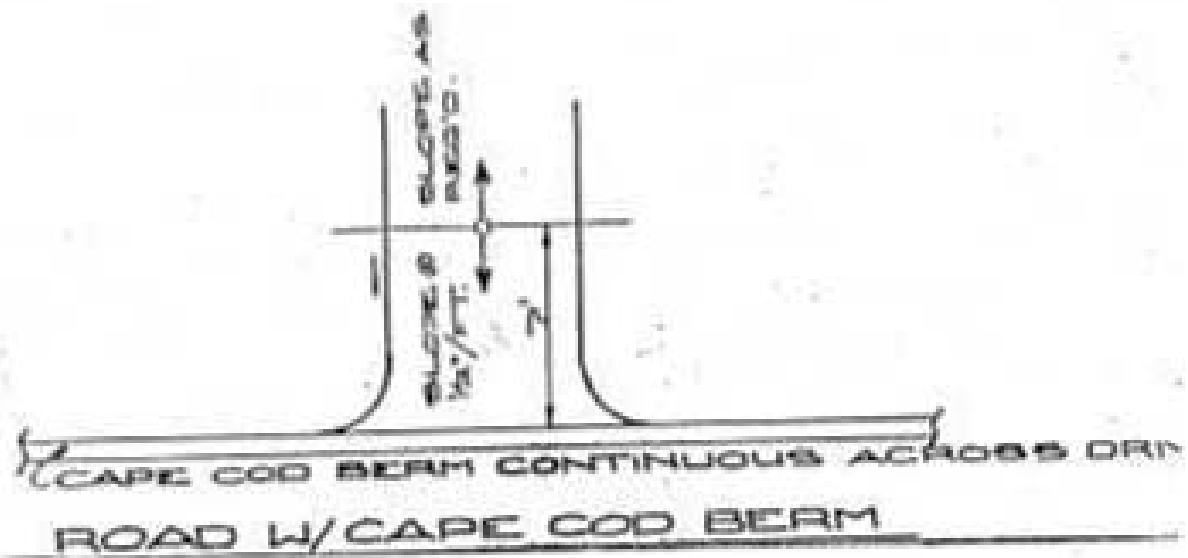
UNDERDRAIN DETAIL
N.T.S.



TYPICAL SECTION
SECONDARY ROADS
 (N.T.S.)



TYPICAL SECTION
COLLECTOR ROADWAYS
 (N.T.S.)



DRIVEWAY DETAILS

N.T.S.