

Town of Windham



# NH 111 Corridor & Wall St Connector Feasibility Study

**Project Advisory  
Committee Meeting  
January 19, 2010**





# Agenda

- Welcome/Introductions
- Public Comment
- PAC Meeting 2 Summary
- Problem Statement
- Vision Statement
- Project Task Update
- Initial Traffic Modeling Results
- Future Land Use Assumptions
- Project Schedule
- Project Administration
- Other Business
- Adjourn





# Problem Statement

## Version 1

The high volume of vehicular traffic on Route 111 impedes the connectivity of one side of the historic town center to the other and this is likely to worsen with the improvements to I-93. The Town's road network and land use policies do not support alternative modes of travel, such as bike, pedestrian and public transportation. The domination of vehicular traffic prevents the town center from reaching its potential as a vibrant village center and community gathering place.



# Problem Statement

## Version 2

An important goal of the Town of Windham, N.H. is to create a vibrant and walkable village center, with a variety of civic, commercial and multi-family uses and a community gathering space. The high volume of through traffic on the state highway that bisects the town center, which is likely to increase with the improvements to Interstate 93, and the Town's vehicle-oriented land use policies are barriers to achieving this goal.



# Problem Statement

## Version 3

The character of the Town's existing historic center, its residents' quality of life, and especially the peaceful residential neighborhoods and abundant open space, are threatened by the volume and speed of traffic on both Route 111 and North Lowell Road. The Town's land use policies and recent highway-oriented development exacerbate the problem and limit transportation choices. The volume of through traffic is likely to increase with improvements to I-93 further deteriorating the quality of life.





# Vision Statement

## Version 1

The historic town center of Windham, NH will become a vibrant and walkable village center accessed by a road that serves both local and through traffic in a quiet, safe and efficient manner. Community gathering spaces, new retail and civic destinations, and a range of housing options, all served by multiple modes of transportation, will enhance the quality of life and sense of community for town residents, and attract visitors from around the region.



# Vision Statement

## Version 2

The historic town center of Windham, NH will become a walkable village center and community gathering place accessed by multiple modes of transportation – bikes, pedestrians, cars and public transit – that serve primarily local traffic. Through traffic will be served by alternate transportation facilities and will not impact the village center.



# Vision Statement

## Version 3

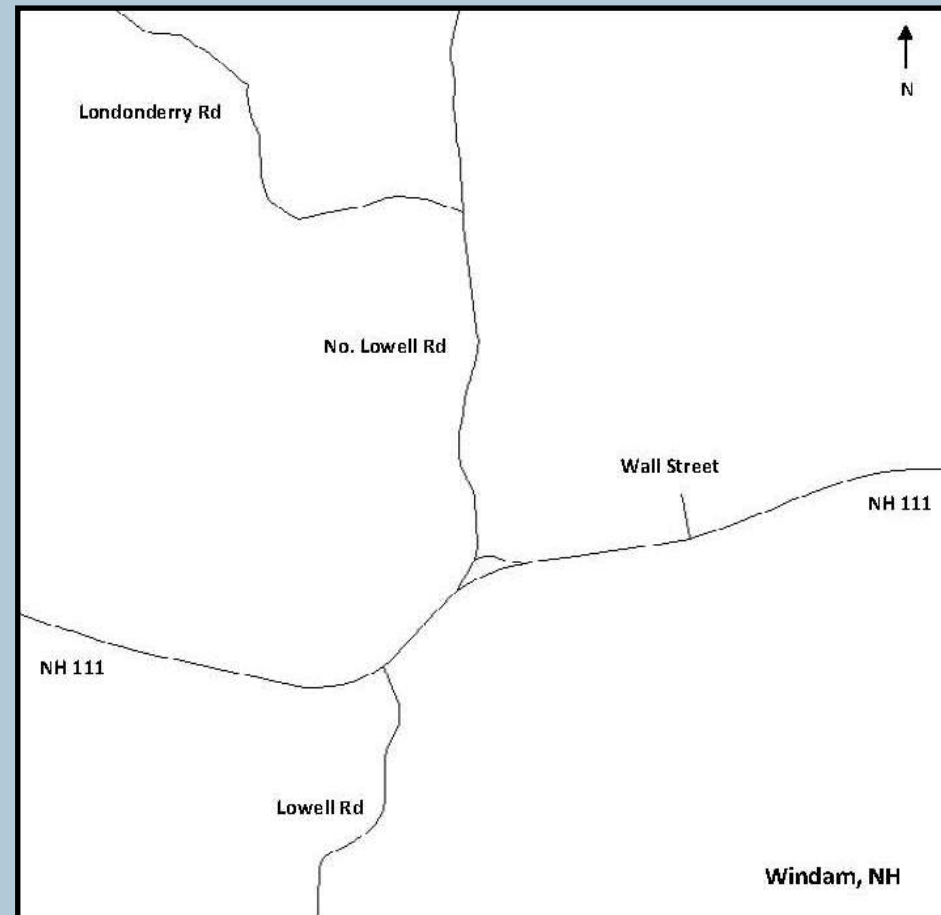
The quality of life for the residents of Windham, NH will be enhanced by the reduction of traffic volume and speed, and the congestion, noise and pollution that they cause, on the state road that passes through the town center and on North Lowell Road. The attractive residential neighborhoods surrounded by protected open space and sensitive environmental areas, so highly valued by Town residents, will be preserved.





# Modeling Results

- RPC Regional Demand Model
- Future Year 2035
- AM & PM Peak Periods
- No Build
- Wall Street Extension
- Wall Street Extension and NH 111 Bypass

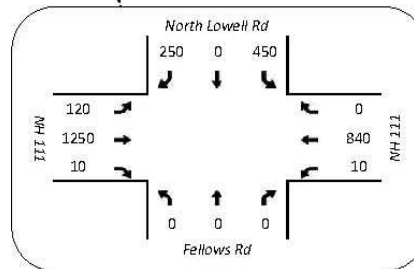
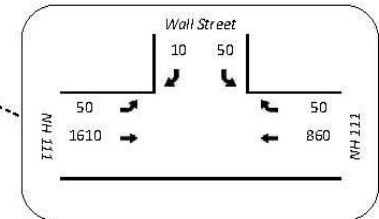
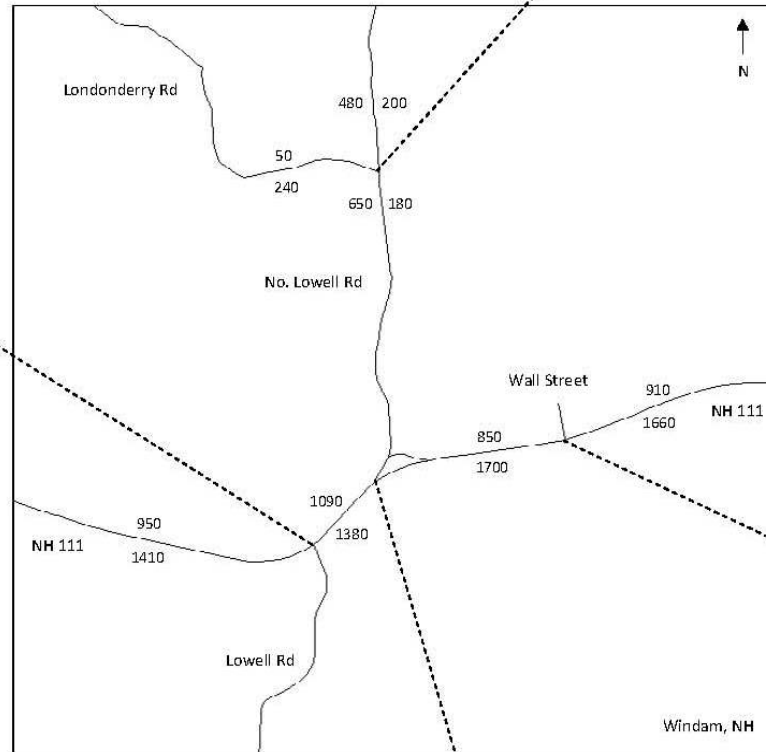
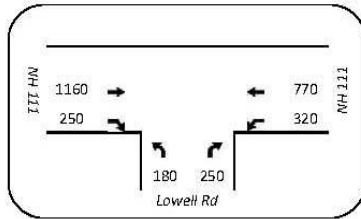
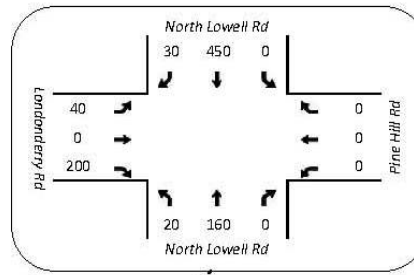


Year / Scenario:

Period:

2035 No-Build

AM

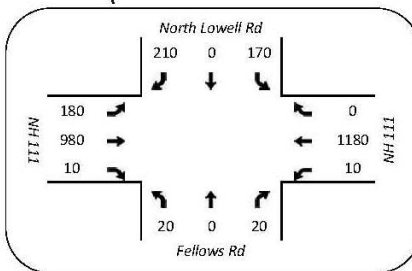
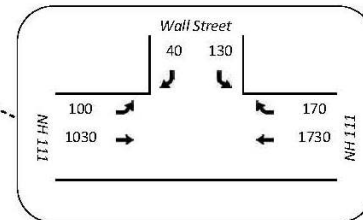
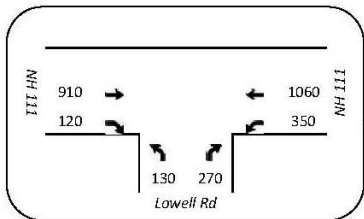
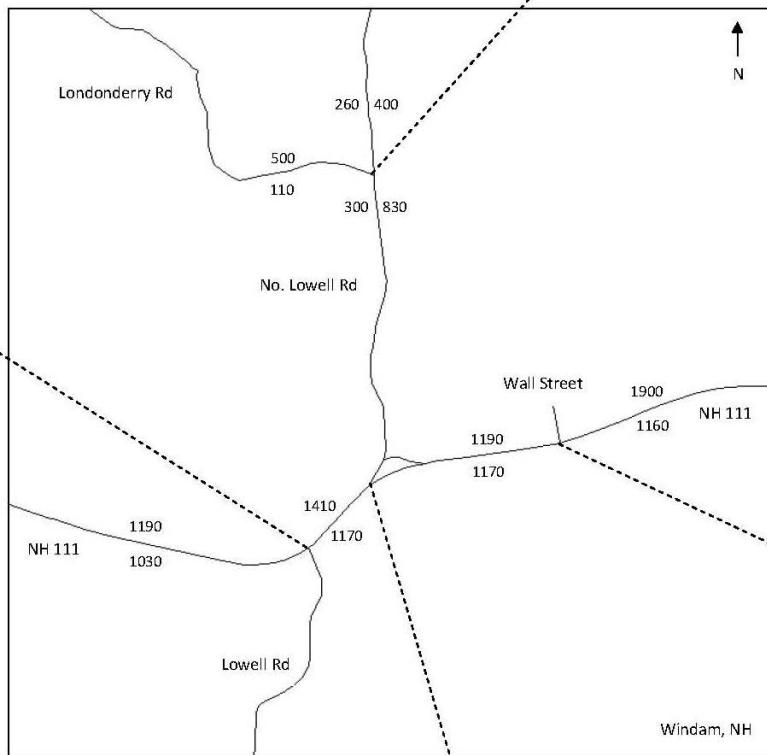
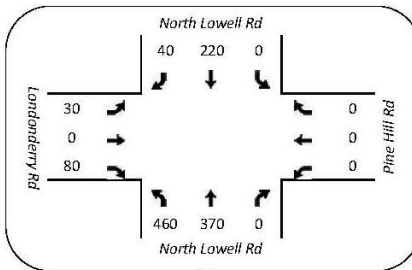


Year / Scenario:

Period:

2035 No-Build

PM



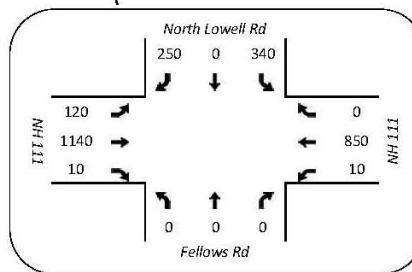
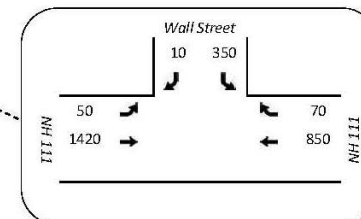
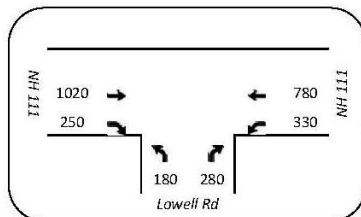
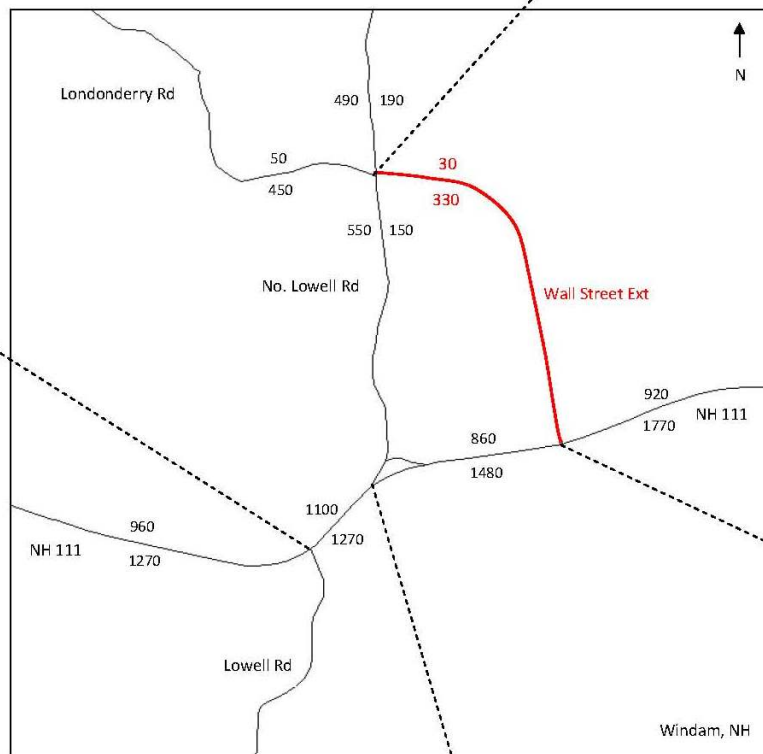
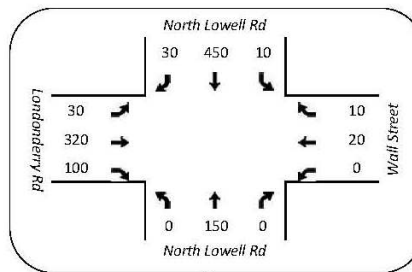


Year / Scenario:

Period:

2035 Wall Street Ext

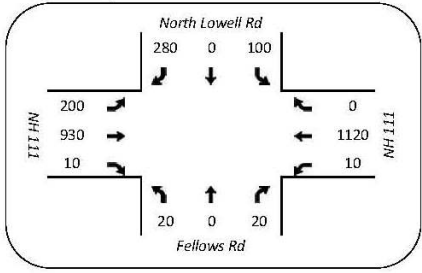
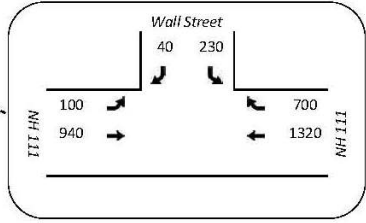
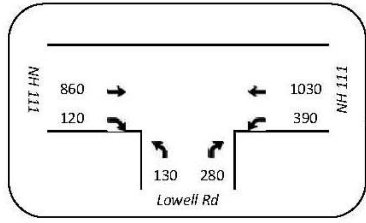
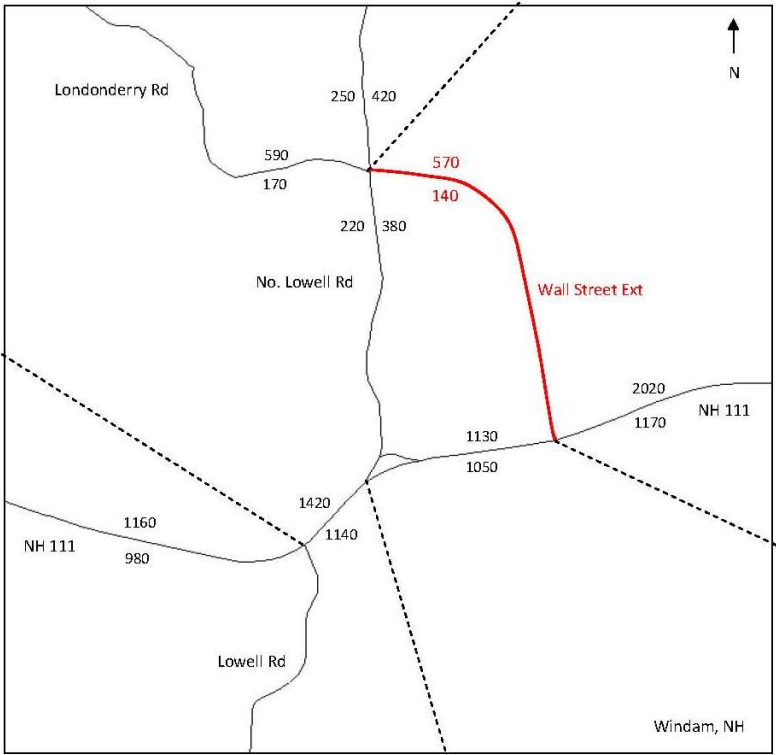
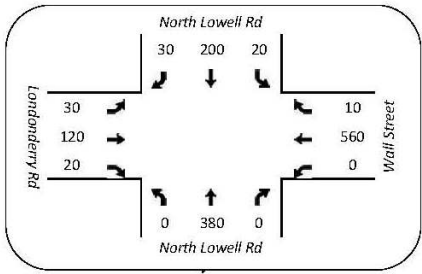
AM



Year / Scenario:

Period:

**2035 Wall Street Ext** **PM**

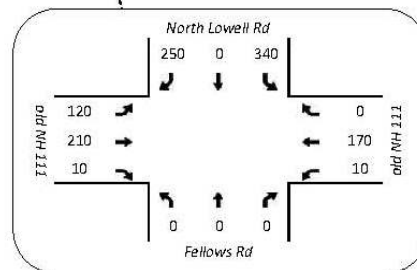
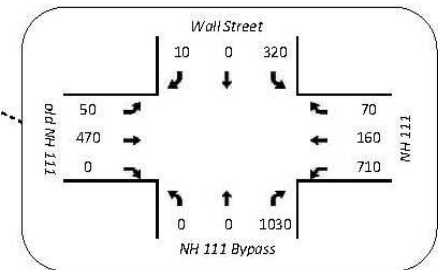
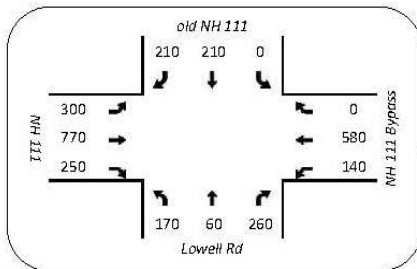
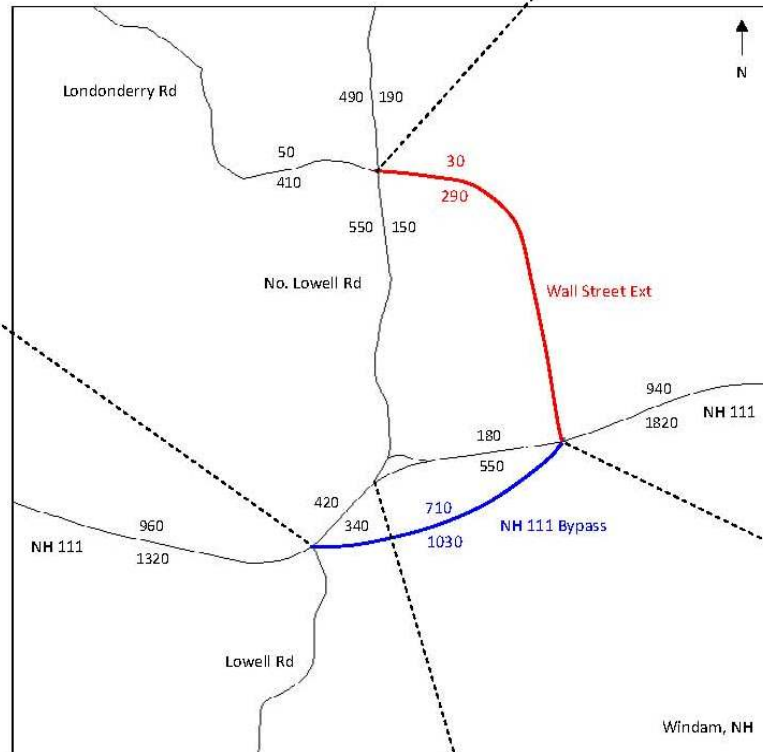
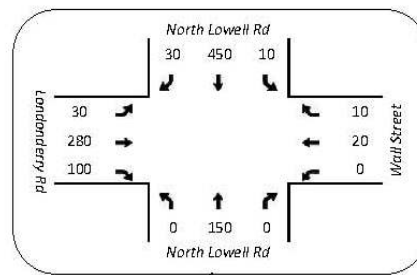


Year / Scenario:

Period:

2035 Wall Ext & NH111

AM



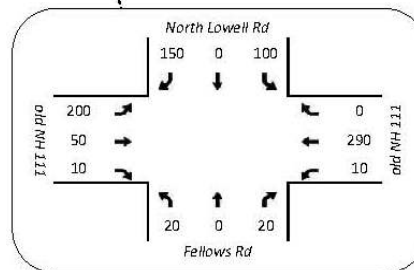
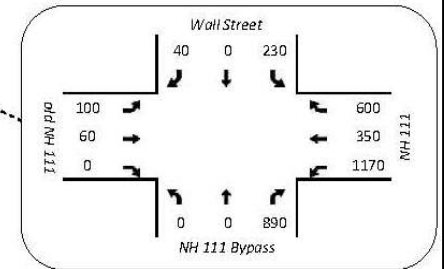
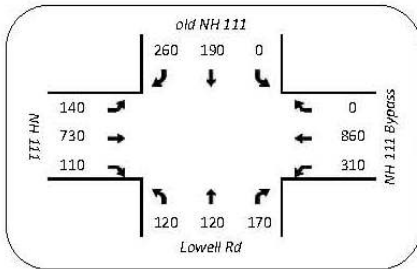
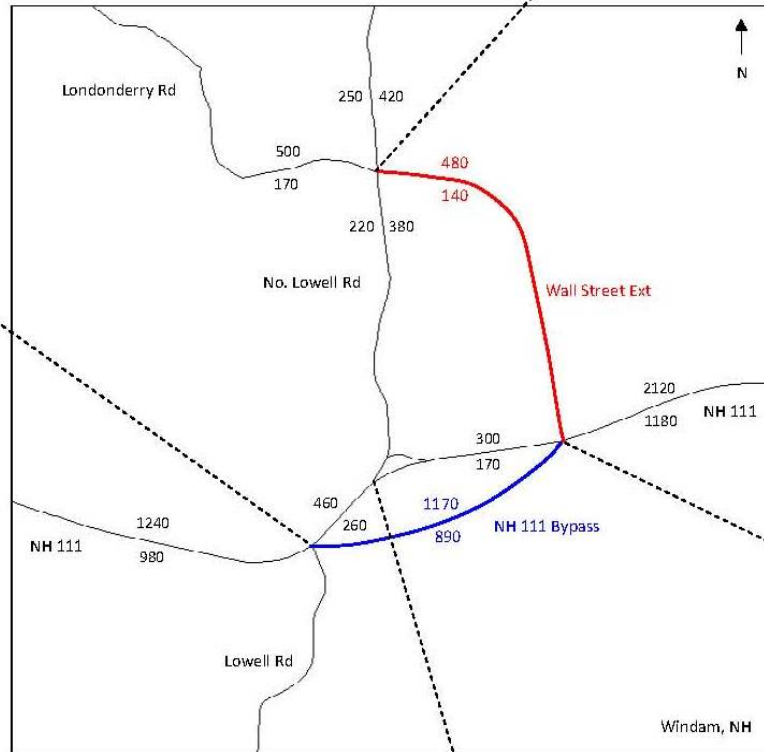
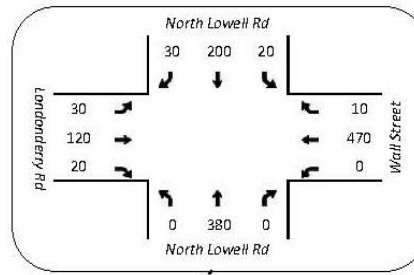


Year / Scenario:

Period:

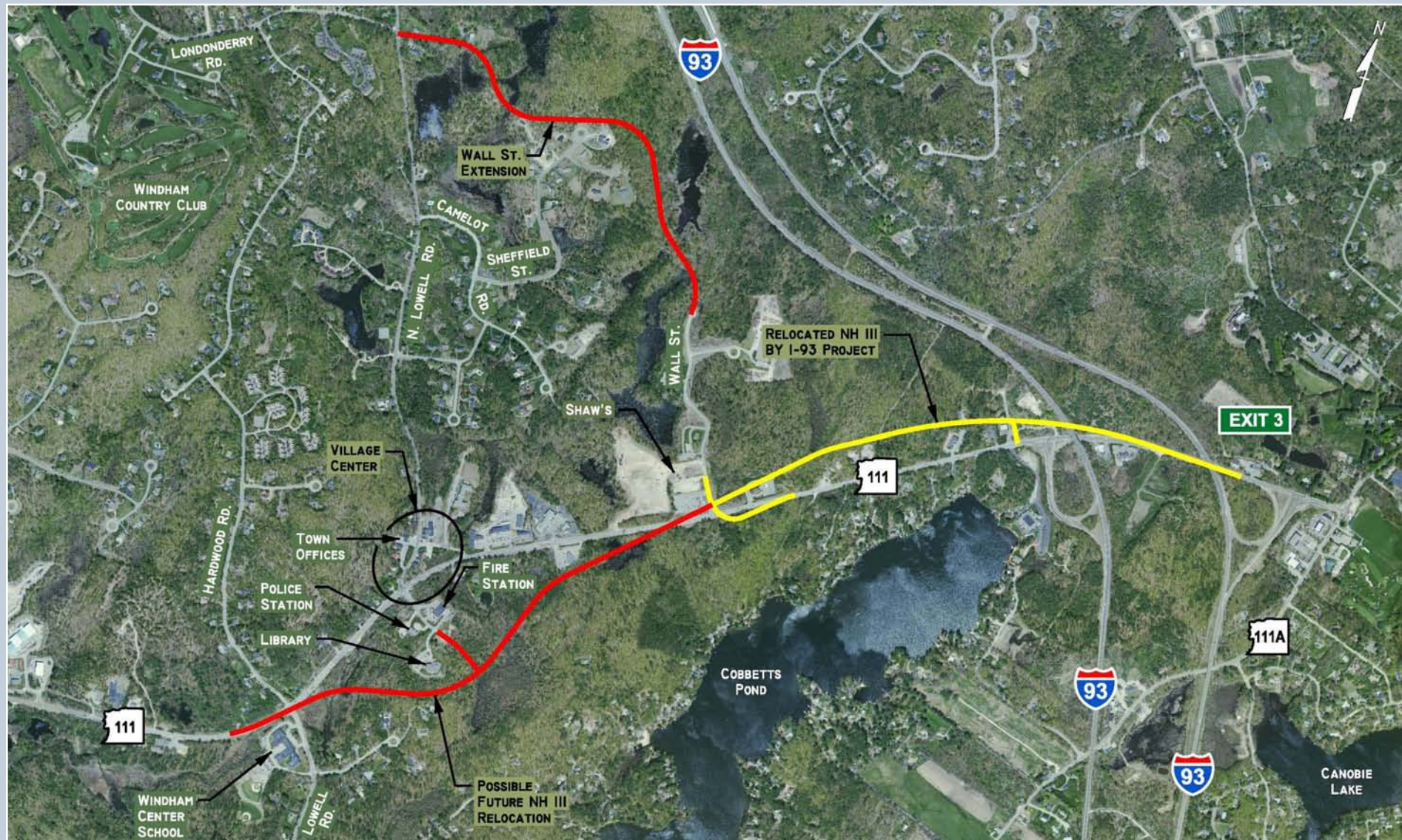
2035 Wall Ext & NH111

PM





# NH 111 Corridor







# Questions / Comments